

## OUR MISSION

We combine science and compassion to deliver innovative solutions that equip adults to meet children's needs and cultivate their strengths.

## OUR VISION

Imagine a world where every child's natural strengths are nurtured, so they realize their endless potential.

**With All Families, from Beech Acres Parenting Center, represents our focus to reach all families regardless of how they are put together.**



### Problem:

Every day there are loving caregivers in Greater Cincinnati that may be facing barriers, unexpected responsibility or simply want to open their home to children. It can be difficult to know how to sift through advice kindly offered or Googled. It is a challenge to navigate the many resources available in Greater Cincinnati.



### Our Solution:

Our team is equipped to support foster families, adoptive families, kinship families, and any family facing challenges and hardships that need empathy and help connecting to resources.

For individuals willing to open their hearts and their homes to children who are simply needing safety & love, the Beech Acres foster care and adoption team has been supporting foster families for over 40 years.

For a grandparent, aunt, uncle, or even a close friend taking care of a loved one's child full time, this support network offers individual coaching, support groups, and an evidenced-based parenting curriculum.

For parents fulfilling a referral from Hamilton County Job & Family Services, the Parent Enrichment Program (PEP) is a non-judgmental, goal-driven parent and child-focused program. Beech Acres Parenting Center also serves young parents, parents who play both mom & dad, plus families whose financial burdens are adding stress to their family home.

### Quick Facts:

#### Persons Served

Over 1,000 Served (FY21)

#### Accreditation

- Variety of services are designated as a "Promising Practice" by the Centers for Disease Control and Prevention.
- Triple P is an evidence-based parenting curriculum, offered for caregivers in both Parent Enrichment Program (PEP) & Kinship Connections.

#### Services Offered for Parents, Kin Caregivers, & Foster Care

- Natural Strength Coaching & Navigation
- Behavioral Health
- Reunification Services
- Training and Licensing
- Foster Home Oversight
- Home Study
- Advocacy & Matching
- Adoption Finalization
- Caregiver Education
- Support Groups
- Parent Education
- Visitations Services – On site, In Home, and In the Community
- Case Management & Support



# With All Families™ Impact Report: 2021-2022

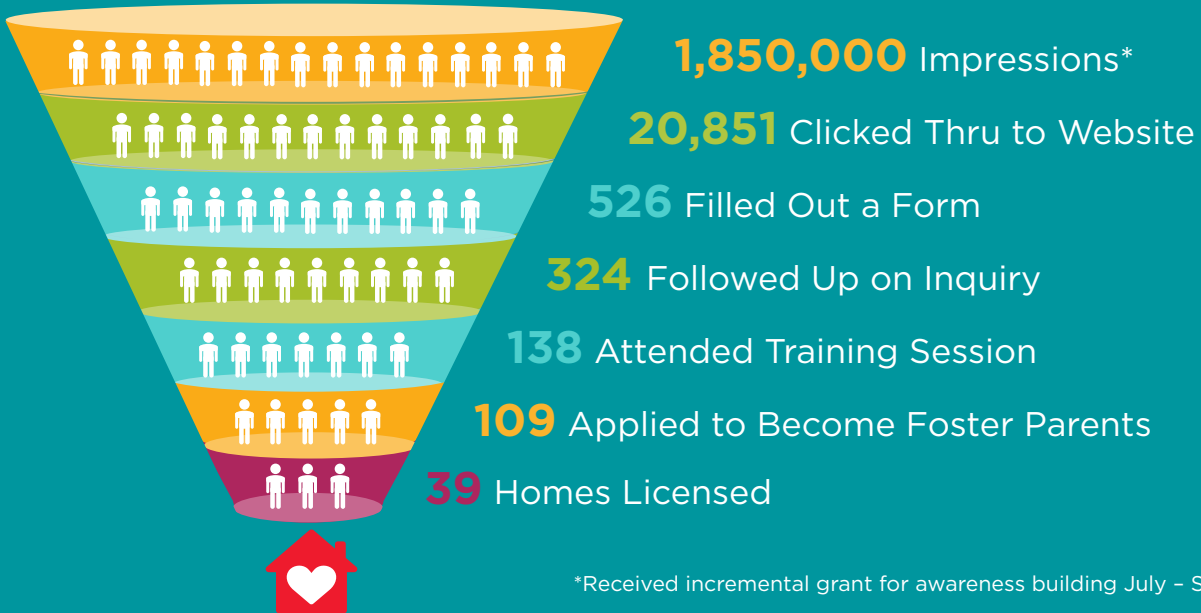
## Kin Caregivers served over 700 persons.

**77%\*** demonstrated improvement on the Arizona Self-Sufficiency Scale. This includes questions about financial stability, safety, parenting and health.

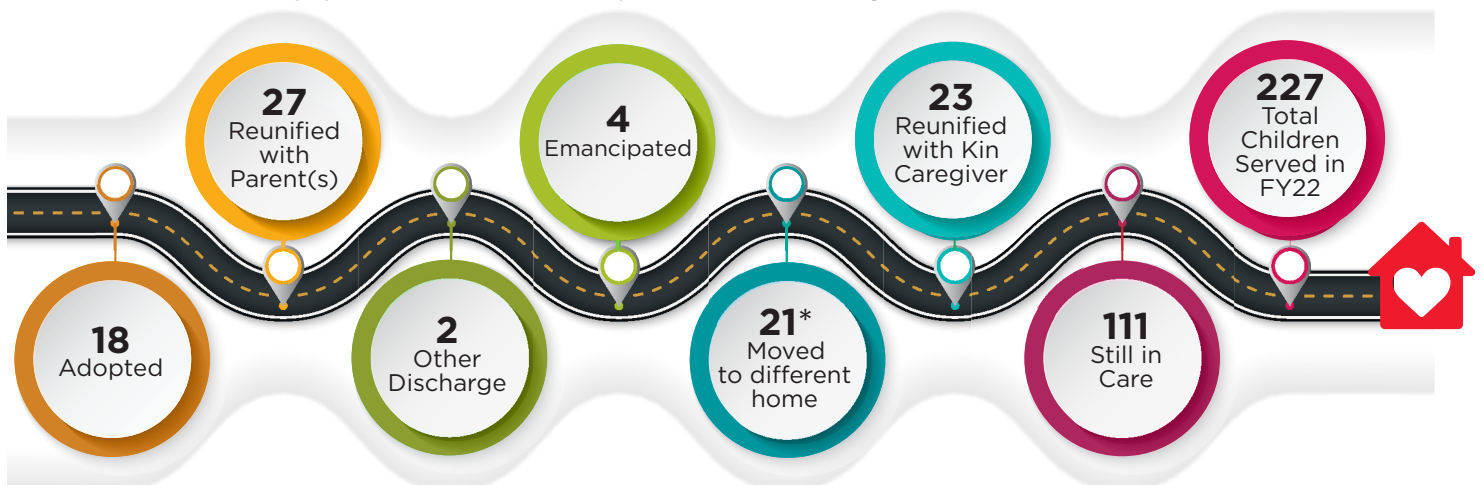
**62%\*** demonstrated an improvement on the Protective Factors Survey, measuring aspects of social relationships, planning behaviors and confidence. These factors contribute to psychological resilience in emerging adults and children.

\*Of those surveyed.

## Finding the adults to create a safe & loving home for these children through Foster Care and Adoption is literally **39 : 1,850,000**.



Every child's journey is different but the **With All Families™** team is there to support each step of the way.



Typically the child needed a higher level of care. BAPC has a 9% disruption rate with a goal of <10%, some agencies can be as high as 30%.