



## WAYS TO GET INVOLVED

- 1** | **Follow** us on social media for more stories of impact and helpful parenting resources
- 2** | **Donate** to help more children, families, and educators
- 3** | **Need help?** Contact us for more information at 513.231.6630



# INSIDERS' SCOOP

Volume VI | Issue III | Winter 2022

**Inside:** Your Support  
Expands Our Connection  
in the Community



Because of your support, these children have found safe and loving homes. Beech Acres proudly celebrates 41 Foster Care placements and 14 adoptions since July!





# Always there, always care.

The last few months have been an exciting and busy time at Beech Acres Parenting Center. I wanted to take a moment to **sincerely thank you for your**

**generous support** and to catch you up on everything that has been going on.

I am thrilled to share that we have completed our move to our new headquarters located at 615 Elsinore Place Suite 500 Cincinnati, OH 45202, near both Eden Park and the Central Business District. Beech Acres is outwardly engaged in the community because that's where children live their lives every day. **We are excited about our new centralized location that will allow us to connect with more children and families throughout the entire Tri-State.** Stay tuned for ways you can join us in our new space as we host more family-focused events and community engagement activities.

This fall, we began an exciting **new school year serving even more children, families, and teachers.** Beyond the Classroom, our comprehensive solution of wrap-around services for schools is now in 32 schools and The Character Effect™, our social and emotional learning program is now in 49 schools and 15 states! **This exciting growth is only possible thanks to your generous support.** We've also expanded our Parent Connect® offerings growing the successful program

model from pediatric offices to workplaces and healthcare. We're excited to be bringing practical, evidenced-based parenting support to parents in 19 pediatric offices and 14 workplaces. We've received amazing feedback on this unique benefit, and we'll share more in this issue of Insiders' Scoop.

**Through your generous support Beech Acres provides care and resources to all parents, through science, schools, pediatricians, and community access.** Beech Acres is the nucleus where parental challenges and caring support meet. Whether daily concerns or crisis situations, Beech Acres provides compassionate, mindful support, and services that empower when its needed most. Our care is always there.

How do we get there? By making connections; human connections, business connections, and community connections. Ambitious goals can lead to extraordinary accomplishments. I believe with your continued support we are well-equipped to deliver on our mission and vision and **together we will accomplish great things for the parents, families, and children in our community.**

I am very excited about our future and energized about the exciting and important work we have ahead of us.

**Laura Mitchell**  
President & CEO

## BOARD OF DIRECTORS

Sara M. Cooperrider  
Board Chair

Bob Welch  
Vice Chair

Beth A. Silvers  
Treasurer

J.R. Foster  
Secretary

Daniel E. Betts  
Elaine Billmire, M.D.  
Christopher F. Bolling, M.D.  
Susan J. Cummings  
Jennifer L. Dougherty  
Christine Fisher  
Justin D. Flamm  
Joanne Formal  
Jenny Franta  
Susan K. Goldberg  
Rogelle A. Hackworth  
Andy Holzhauser  
Craig Jackson  
Laura Lewin  
Chad D. Molley  
Chandler Patterson  
Kristal Renner  
Robert Shapiro, M.D.  
Tracy Stillwell  
John Webster  
The Honorable Marilyn Zayas

## PRESIDENT & CEO

Laura Mitchell

## Donor Spotlight: One family's connection spans decades



Susan and Doug Brengle, granddaughter of Centennial Campaign Chair and Board leader Simon Nielsen, stand next to the cornerstone and time capsule at the On the Move celebration.

*"I believe that my Grampa, Simon Nielsen, embraced, supported, and became involved with Cincinnati's General Protestant Orphan Home, because in 1912 at the age of 19 he found himself the head of his family. His father had passed away & Grampa, one of 8 children, quickly needed to support his mother, grandmother (both of whom had immigrated from Denmark), as well as, his 6 younger siblings, the youngest of whom was only 7 years old. **He knew first-hand how desperately children needed a family, to feel secure, safe, and loved....**While my memories of Beech Acres and the annual Orphan Feast will forever be from this beautiful campus in Mt. Washington, I applaud this opportunity to celebrate the past, honor my Grampa and Dad, and will continue to support Beech Acres in its new location where it can better serve the current needs of children and families."*

**Thank you, Susan and Doug, for continuing your grandfather's legacy of supporting children and families in our community.** We are honored by the impact that you and your family have had advocating for and supporting Beech Acres children and families thrive over many decades.

## BEECH ACRES FOUNDATION BOARD

Mindy McLaughlin  
Chair

L. Richard Rothhaas  
Vice Chair

Brittany A. Speed  
Treasurer/Secretary

Susan J. Cummings  
Chris Hagedorn  
Laura Mitchell  
Aliya Riddle



# Connecting Parents and Caregivers In The Community

Thanks to you, foster families, adoptive families, kinship families, and any family facing challenges and hardships can find compassionate support and help connecting to resources.

Compassion is at the heart of what we have done for over 170 years. While the challenges that parents, families, and children face have changed, our caring approach has not. Empathy, love, kindness, and hope guide our services. We set an intention to be present with each of our clients, actively listen to their challenges, ask powerful questions, and offer solutions that enhance and improve their lives.

Our recent move to modern, centrally located facilities in downtown Cincinnati opens exciting opportunities for us to deepen our connection with the community. We're thrilled to invite families into our facilities for engaging opportunities such as:

## MINDFUL STRENGTH BINGO

Mindful Strength Bingo is a fun, free event to reveal character strengths among family members, while teaching about mindfulness and positive psychology. Mindful Strength Bingo is presented by The Character Effect™, an evidence-based social emotional learning program for schools.



## PARENTING: A TO Z

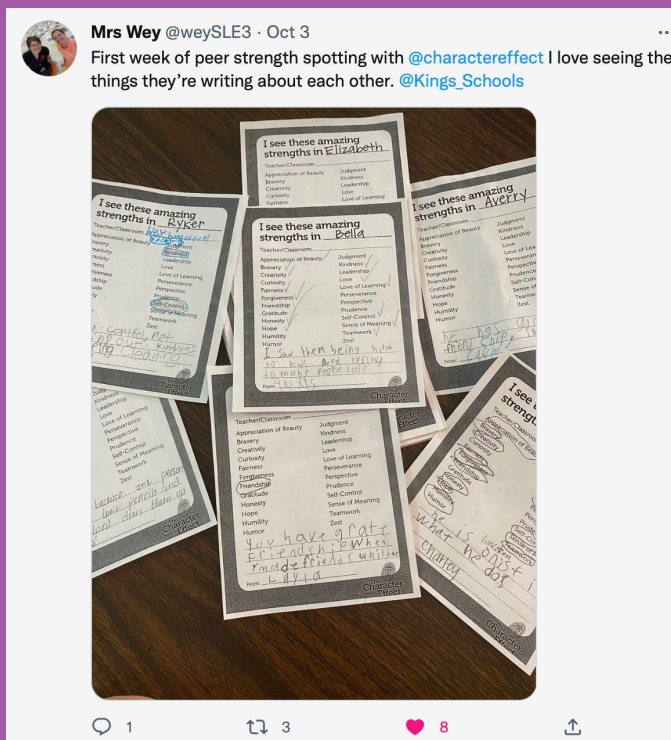
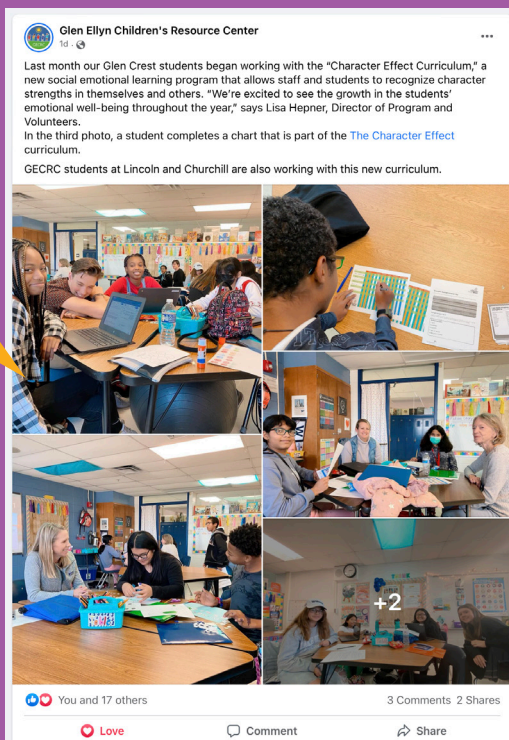
Parenting A to Z from Parent Connex™, will provide intentional time for parents/caregivers and toddlers to connect and play together to build strong bonds for life. This will be a fun, interactive class full of strength-spotting and snuggles.



As Seen  
On Social  
Media!

Thanks to your support, The Character Effect™ is improving student's emotional well-being.

Follow us to see more testimonials from our students and teachers!



## Parent Connex™ Supports Employees With Their Most Important Job: Raising Children

Employees who are also parents, foster parents, or kin caregivers have another full-time job, raising capable, caring, and contributing children. Parenting is the most challenging, yet most rewarding job employees have. Thanks to your support we provide turnkey monthly parenting content, online lunch 'n learns (we call them Parenting: A to Zoom) and provide individual sessions for employees to improve and

strengthen their relationships at home.

### Here's what businesses are saying about this innovative benefit.

"As busy parents who balance kids and career, the Kroger Parents Associate Resource Group leadership team were searching for parenting resources to aid, assist, and support our members' parenting journey. The content provided by Beech Acres has educated our members each month with new topics, and also allows us to consistently engage with our members during quick Coffee Connects

with very little lift on our part. Beech Acres sends us monthly materials which allows us to facilitate fruitful conversations among our members. It's a win-win!"

"I especially loved last week's session. Friendship is hard to explain, and it gave me an easy way to talk to my child about good friends and not so good friends-as well as reinforce what it means to be a good friend to others. I really enjoyed it. It was great content."

"At TiER1 we've chosen to provide the insights offered in the Parent Connex™ monthly topics to our employees, launching in September for the back-to-school season. Not only is it affordable, but it's also been very easy to implement. The way we see it, if it helps any employees through the challenges of parenting, it is a win. We're proud to partner with an organization making a positive difference in the world today."

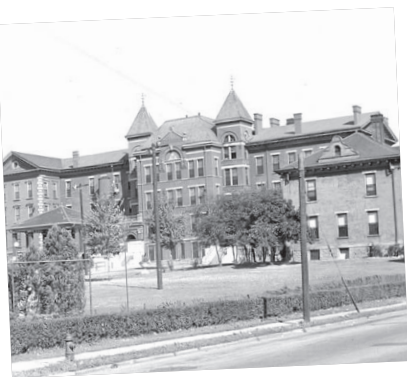




# On The Move:

## Honoring the Impact at 6881

For 73 years Beech Acres Parenting Center was headquartered at 6881 Beechmont Avenue in Anderson Township. On October 20th, we said farewell to this location with an amazing event attended by nearly 200 past and present staff members, board members, clients, former residents, donors, and members of the Anderson community.



*"My husband, BJ and I started our Foster Care journey right here on the Beechmont campus in 2016. Over the next few years, we opened our hearts and home to many children. We are now blessed with 5 children! I now have the honor and privilege to work alongside our Foster Care and Adoption team and all of you, by making a difference in the lives of others. We will cherish the special memories that we made here on this beautiful campus."*

– Calena Durel, Licensing Coordinator



*"Our beautiful property in Anderson Township has been a wonderful home for Beech Acres Parenting Center. Beech Acres is outwardly engaged in the community because that's where children live their lives every day. We are excited about our new centralized location that will allow us to connect with more children and families throughout the entire Tri-State."*

– Laura Mitchell, President & CEO



*"I am the daughter of two residents of The General Protestant Orphan Home (Edna Liebert, 1936-1946) and Jack Whitt (1938-1946). I grew up attending "The Feast" every year. While Mom & Dad would spend time with many of the other "orphans", we kids were allowed to ride rides and bet at the various booths. We always came home with baskets of food that many of us would win."*

– Denice Whitt Yosafat



*"Today we are celebrating a chapter in the book of Beech Acres. We are celebrating this space, this place and all of the amazing gifts it has brought to our work in supporting kids and families over the past 72 years. It has been said that the times of greatest change are also the times of greatest possibility. But through the wisdom of our board and staff, we realized that the world was changing. The needs of those in our care were changing. And we courageously leapt forward. And because of that insight, that wisdom, we have become the amazing organization we are today. So today, we say thank you to 6881 Beechmont and the community that has supported us. And, even as we say goodbye, we look forward with eagerness and enthusiasm and to the adventures yet to come"*

– Dave Brewer, Senior Parenting Specialist

In 1948, The General Protestant Orphan Home purchased a 60-acre farm on the boundary of Mt. Washington and Anderson Township, a beautiful rural setting amid stately beech trees, where the children had been accustomed to camp for a few weeks each summer. Board Chair Everett Townsley donated one-third of the purchase price for the new location, which came to be called Beech Acres. There were six cottages housing 10 to 12 children each and a handsome administration building, arranged around a grassy circular lawn. In 1949, after a century on Burnet Avenue, the Home moved to Anderson Township and evolved into the Beech Acres Parenting Center of today. But **our driving force has remained the same from the start – to help children grow into capable, contributing, and caring adults.**